



# **ClearPath OS 2200 IDE for Eclipse**

Internalization of OS 2200 Eclipse IDE

ClearPath OS 2200 Release 16.0

January 2016

8205 7043-000

NO WARRANTIES OF ANY NATURE ARE EXTENDED BY THIS DOCUMENT. Any product or related information described herein is only furnished pursuant and subject to the terms and conditions of a duly executed agreement to purchase or lease equipment or to license software. The only warranties made by Unisys, if any, with respect to the products described in this document are set forth in such agreement. Unisys cannot accept any financial or other responsibility that may be the result of your use of the information in this document or software material, including direct, special, or consequential damages.

You should be very careful to ensure that the use of this information and/or software material complies with the laws, rules, and regulations of the jurisdictions with respect to which it is used.

The information contained herein is subject to change without notice. Revisions may be issued to advise of such changes and/or additions.

Notice to U.S. Government End Users: This is commercial computer software or hardware documentation developed at private expense. Use, reproduction, or disclosure by the Government is subject to the terms of Unisys standard commercial license for the products, and where applicable, the restricted/limited rights provisions of the contract data rights clauses.

# Contents

## **Section 1.   Install Babel Package for Eclipse IDE**

1.1.	How to install Babel package for Eclipse IDE.....	1-1
1.2.	How to start Eclipse in English language on systems with Japanese Locale.....	1-7
1.3.	How to start Eclipse in Japanese language on systems with English Locale.....	1-9
1.4.	How to change the encoding technique in SciTE.....	1-11



## Section 1

# Installing Babel Package for Eclipse IDE

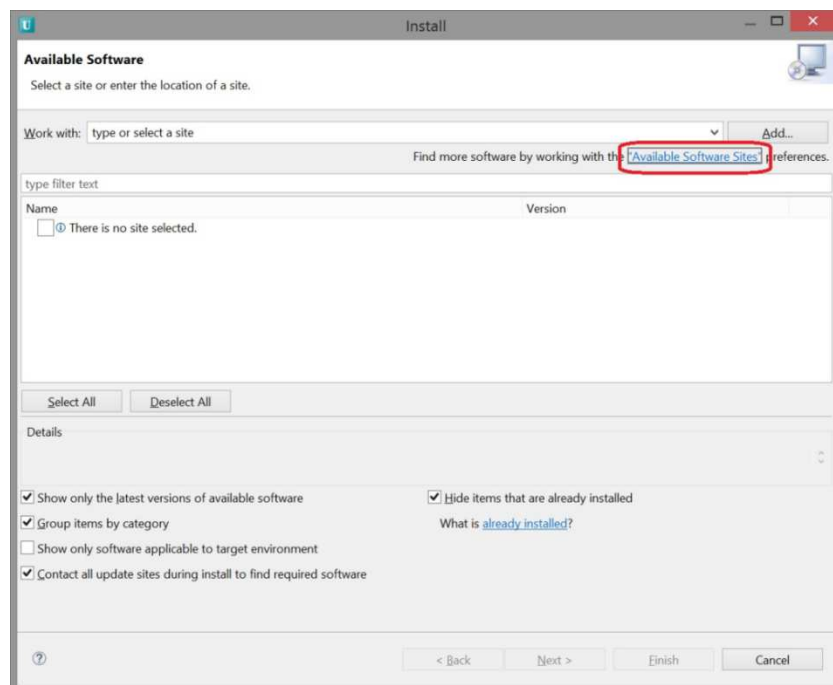
Eclipse is a global community, and it is in everyone's interest to ensure that Eclipse is available and translated in as many locales as possible.

Babel is a set of tools to make the job of globalizing Eclipse projects easier. This document talks about the steps involved in installing the Babel package needed to adapt the Eclipse deliverables to properly run in multiple locales and to translate selected Eclipse projects into multiple different languages (for example, Japanese).

### 1.1. How to install Babel package for Eclipse IDE

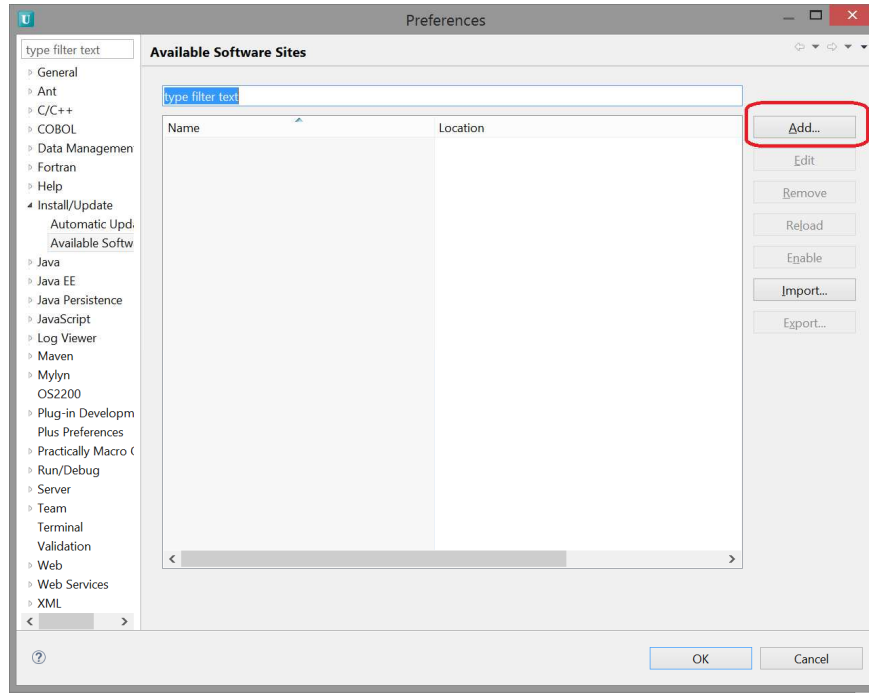
Perform the following steps to install the Babel package for Eclipse IDE:

1. From the Help menu, select **Install New Software**.  
The **Install** window opens.
2. Click **Available Software Sites** as shown in the following image.



The **Preferences** window opens.

3. Click **Add** in the **Preferences** window.

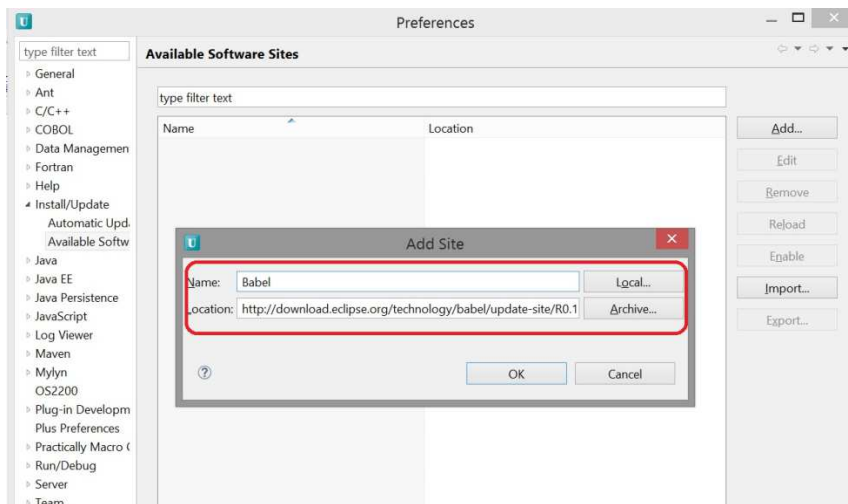


The **Add Site** dialog box opens.

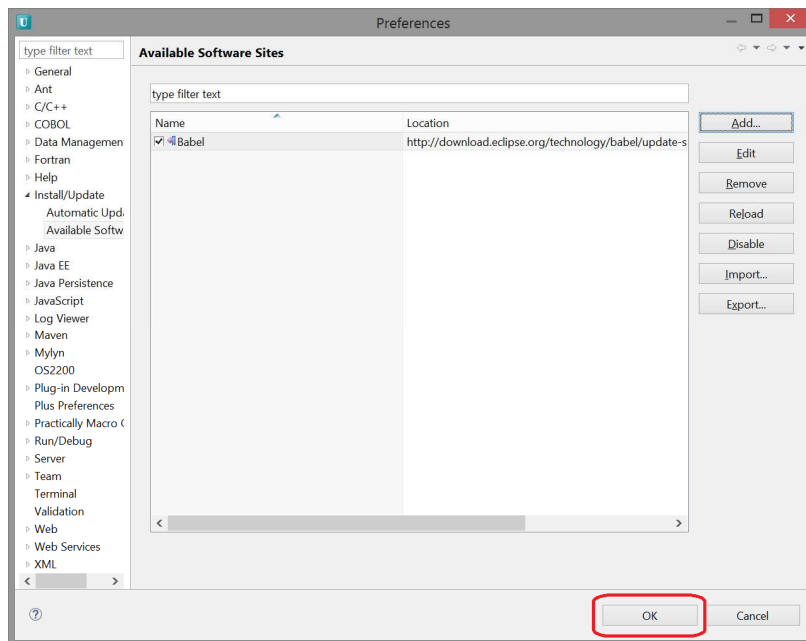
4. Enter the following details in the **Add Site** dialog box and click **OK**.

**Name** – name of your choice.

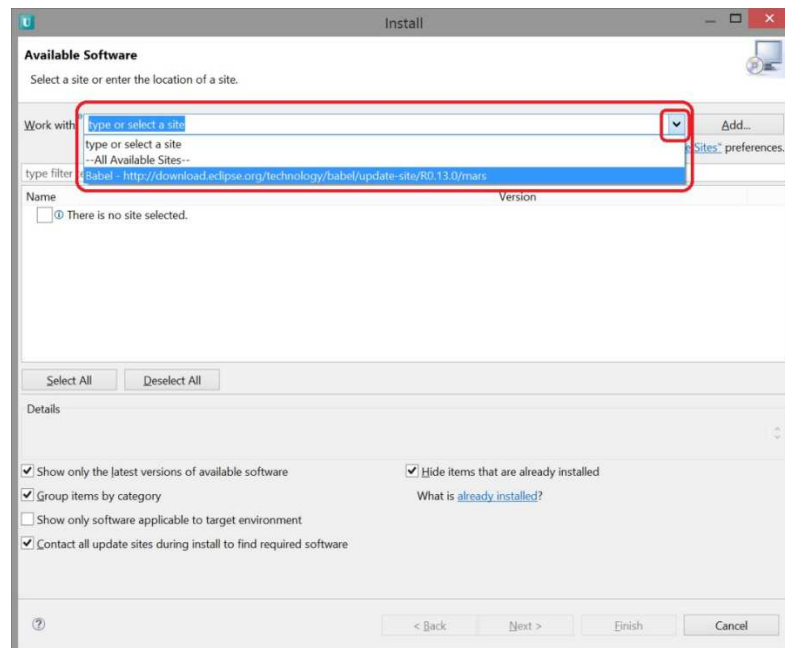
**Location** – the latest version of the Babel package available from the Babel site.  
For example, <http://download.eclipse.org/technology/babel/update-site/R0.13.0/mars>.



5. Select the Babel package name and click **OK**.

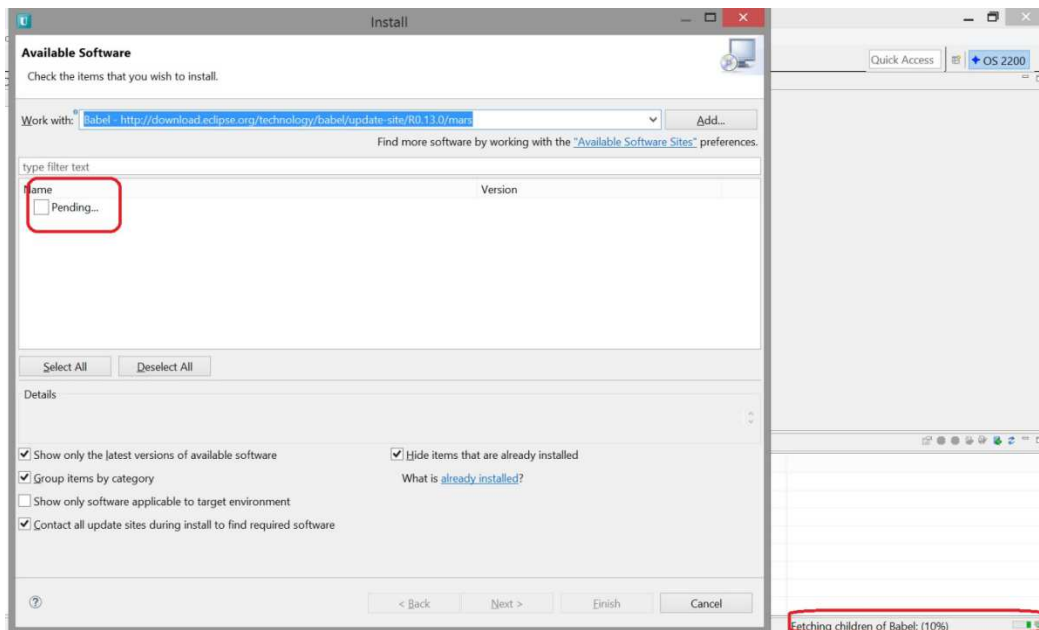


6. Select the Babel package from the drop-down list of **Work with**.

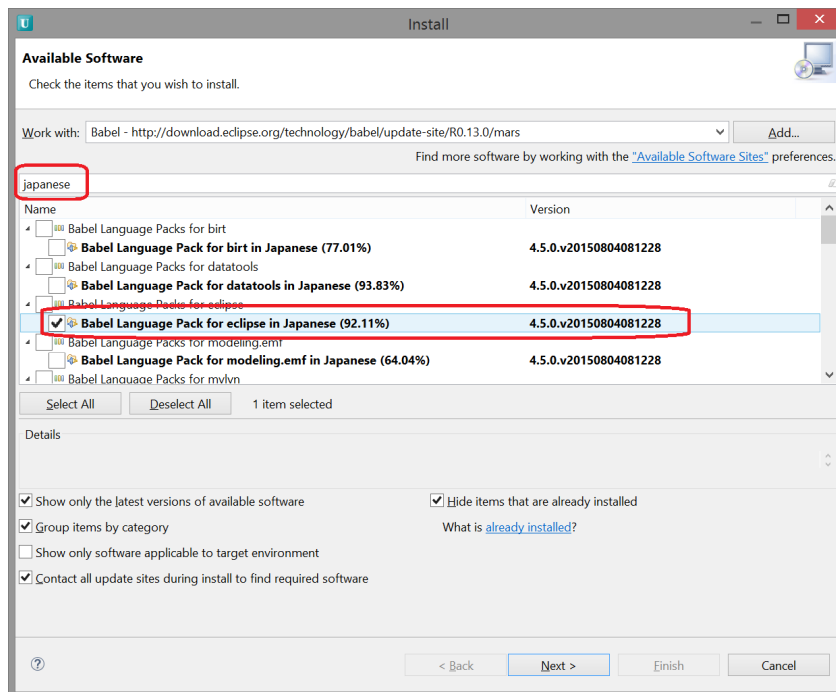


Eclipse will connect to the listed package and load all the available packages.

**Note:** Ensure that the system on which Babel package is installed is connected to Internet.



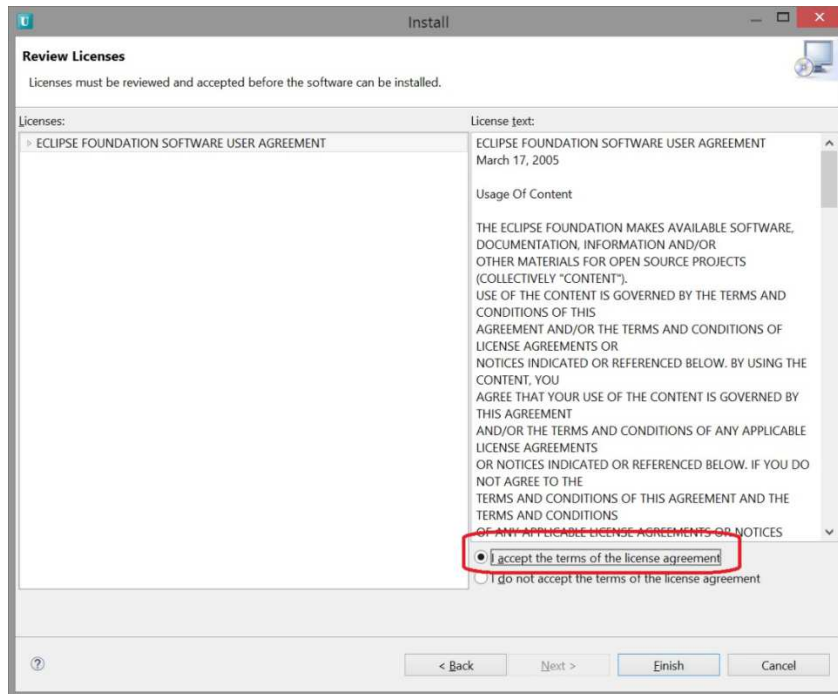
7. Type **Japanese** in the search field and select **Babel Language pack for eclipse in Japanese**.



8. Then, type **CDT** in the search field and select **Babel Language pack for tools.cdt in Japanese** and click **Next**.
9. Review the selected items in the next window and click **Next**.

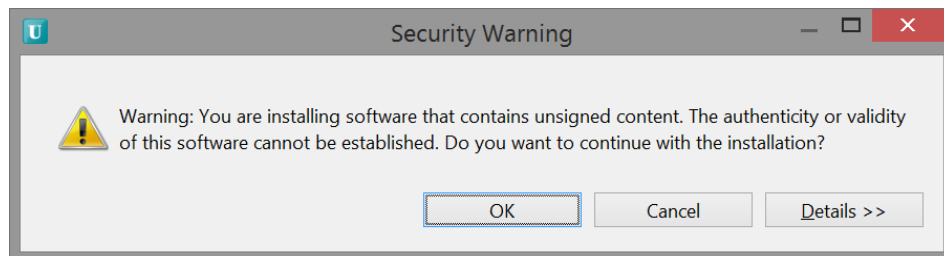


10. Select **I accept the terms of the license agreement** and click **Finish**.

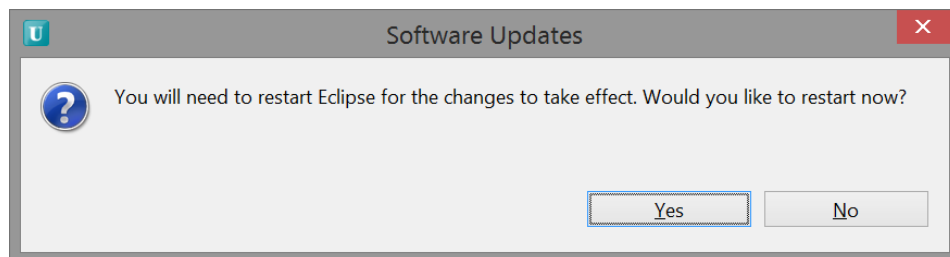


Eclipse downloads the Babel packages.

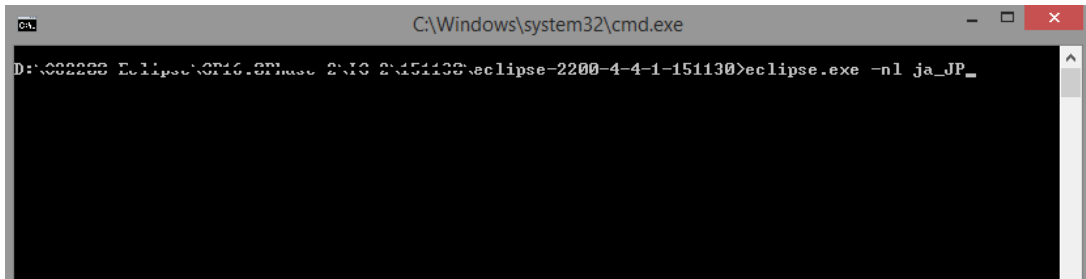
**Note:** Say **OK** to the following **Security Warning** message you get.



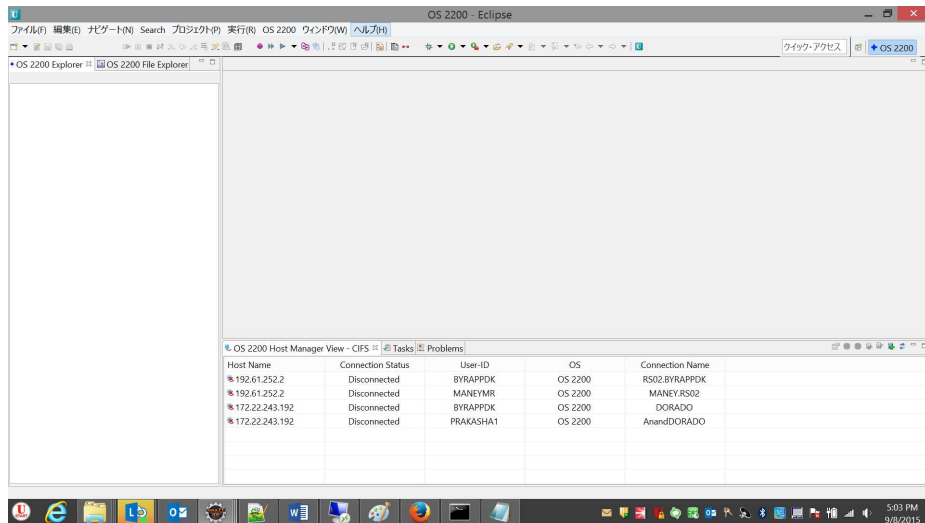
11. Eclipse will ask for a restart once the package updating is complete. Click **Yes** for Babel package to be updated completely.



12. If the operating system is running in Japanese Locale, then Eclipse will load in Japanese. If the operating system is not in Japanese, then run Eclipse from command prompt using “eclipse.exe -nl ja\_JP” as shown in the following figure:



13. Eclipse will start with Japanese Locale.

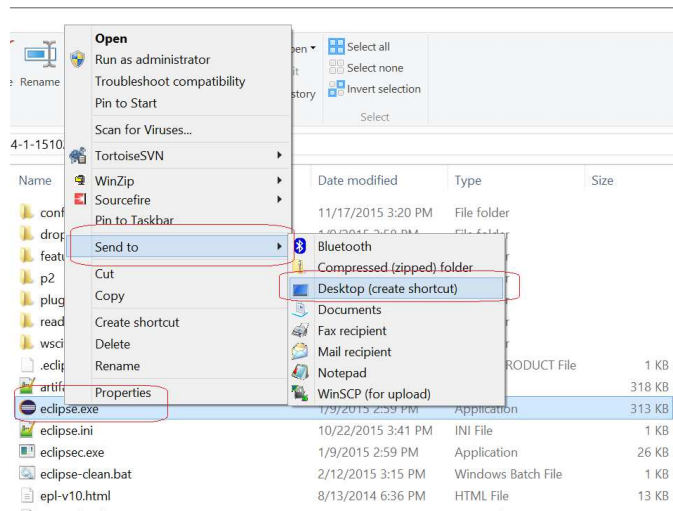


## 1.2. How to start Eclipse in English language on non-English Locale Systems

Perform the following steps to start Eclipse in English language on systems with a different locale, for example, Japanese:

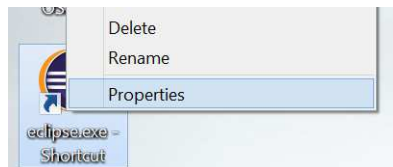
1. Create a desktop shortcut.

Right-click Eclipse.exe > Send to > Desktop (create shortcut).



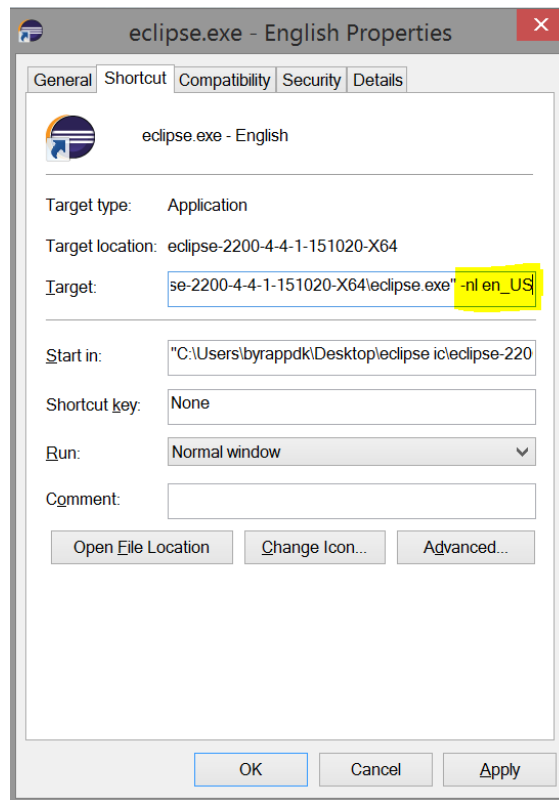
**eclipse.exe Shortcut** is created.

2. Right-click **eclipse.exe Shortcut** and select **Properties**.



The **Properties** window opens.

3. Go to the **Shortcut** tab and add **-nl en\_US** to the directory in the **Target** field.



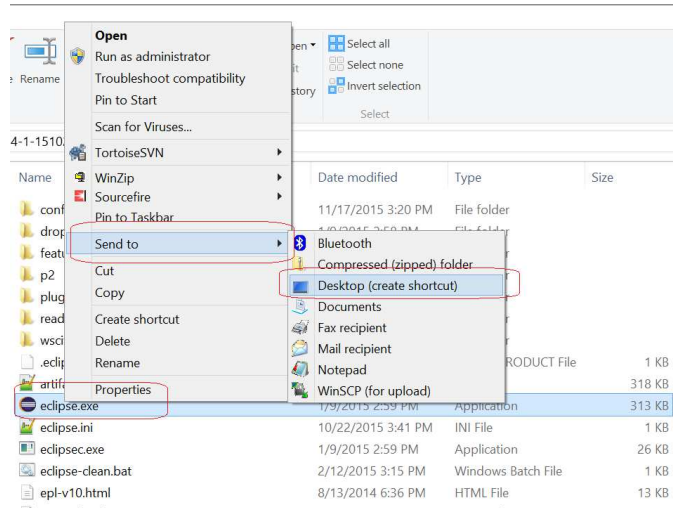
4. Click **Apply** and then click **OK**.

---

## 1.3. How to start Eclipse in Japanese language on systems with English Locale

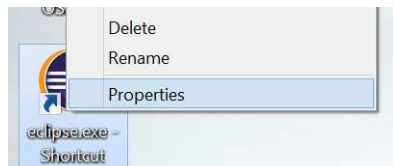
1. Create a desktop shortcut.

Right-click Eclipse.exe > Send to > Desktop (create shortcut)



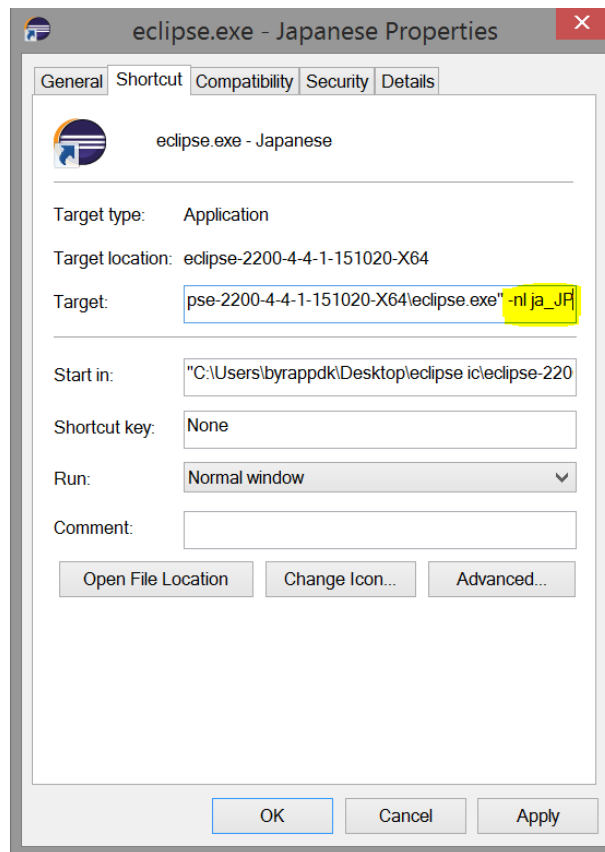
**eclipse.exe Shortcut** is created.

2. Right-click **eclipse.exe Shortcut** and select **Properties**.



The **Properties** dialog box opens.

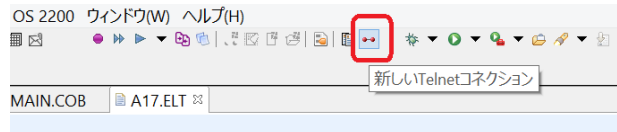
3. Go to the **Shortcut** tab and add **-nl ja\_JP** to the directory in the **Target** field.



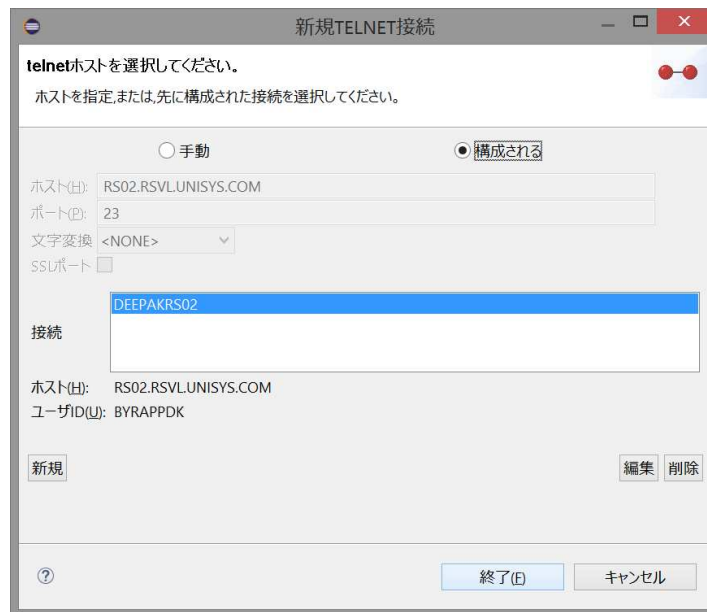
4. Click **Apply** and then click **OK**.

## 1.4. How to change the encoding technique in SciTE

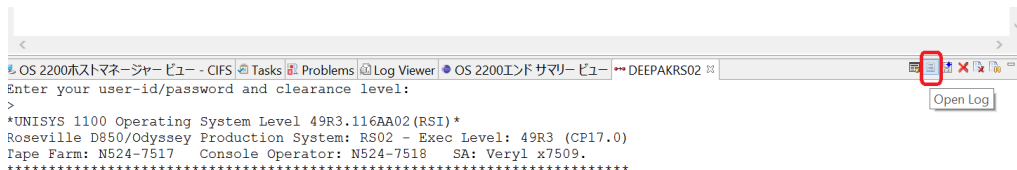
1. Click on Telnet icon.



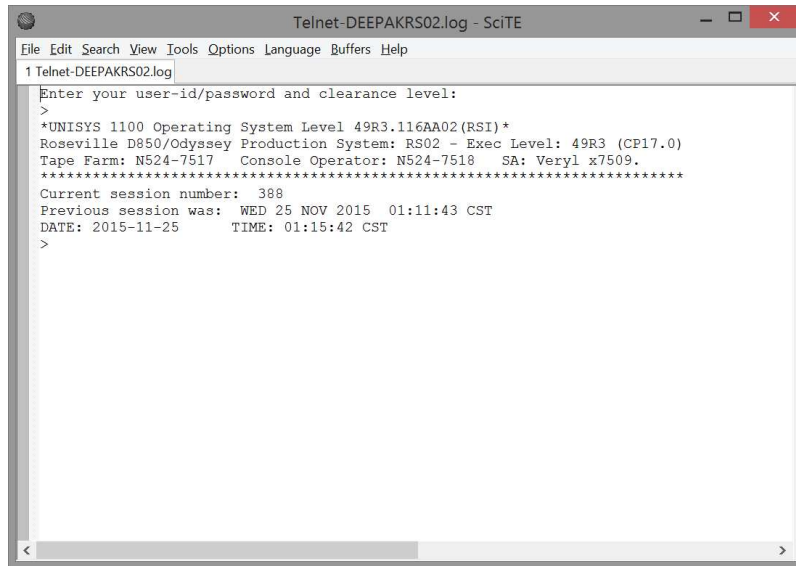
2. Configure the Username and password and connect to OS2200 system.



3. Click the **Open Log Telnet Console** icon in Telnet view.



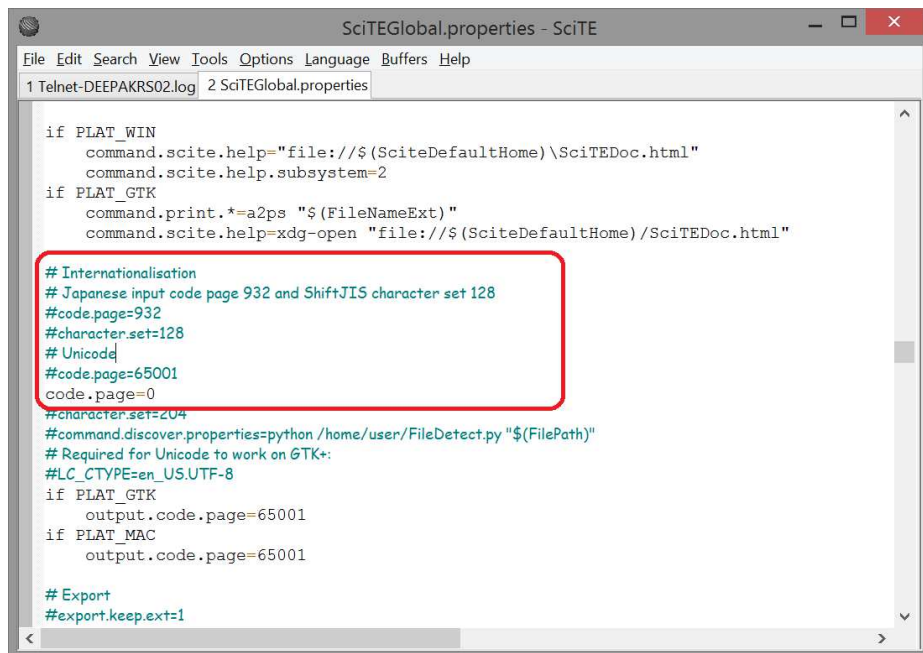
4. The SciTE editor window opens.



```
Telnet-DEEPAKRS02.log - SciTE
File Edit Search View Tools Options Language Buffers Help
1 Telnet-DEEPAKRS02.log
Enter your user-id/password and clearance level:
>
*UNISYS 1100 Operating System Level 49R3.116AA02(RSI)*
Roseville D850/Odyssey Production System: RS02 - Exec Level: 49R3 (CP17.0)
Tape Farm: N524-7517 Console Operator: N524-7518 SA: Veryl x7509.
*****
Current session number: 388
Previous session was: WED 25 NOV 2015 01:11:43 CST
DATE: 2015-11-25 TIME: 01:15:42 CST
>
```

5. Go to **Options > Open Global Options File** and **click SciTEGlobal.properties - SciTE**.

Find Internalization in the settings file.



```
SciTEGlobal.properties - SciTE
File Edit Search View Tools Options Language Buffers Help
1 Telnet-DEEPAKRS02.log 2 SciTEGlobal.properties

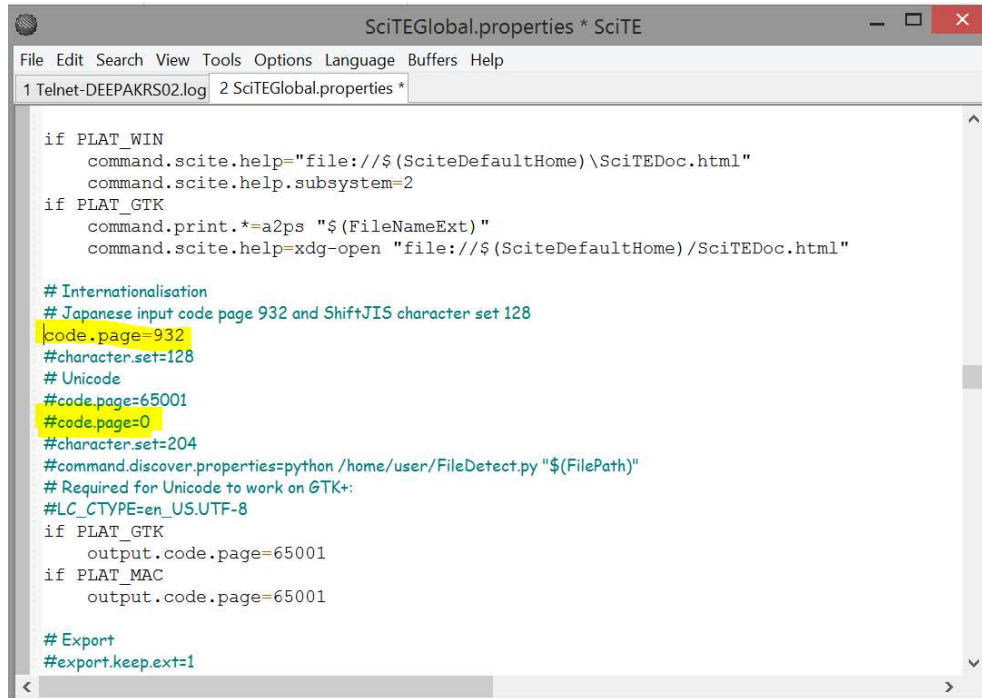
if PLAT_WIN
    command.scite.help="file://$(SciteDefaultHome)\SciTEDoc.html"
    command.scite.help.subsystem=2
if PLAT_GTK
    command.print.*=a2ps "$(FileNameExt)"
    command.scite.help=xdg-open "file://$(SciteDefaultHome)/SciTEDoc.html"

# Internationalisation
# Japanese input code page 932 and ShiftJIS character set 128
#code.page=932
#character.set=128
# Unicode
#code.page=65001
code.page=0
#character.set=z04
#command.discover.properties=python /home/user/FileDetect.py "$(FilePath)"
# Required for Unicode to work on GTK+:
#LC_CTYPE=en_US.UTF-8
if PLAT_GTK
    output.code.page=65001
if PLAT_MAC
    output.code.page=65001

# Export
#export.keep.ext=1
```



6. Remove the # sign preceding `code.page=932` and add a preceding # to `code.page=0`.



```
SciTEGlobal.properties * SciTE
File Edit Search View Tools Options Language Buffers Help
1 Telnet-DEEPAKRS02.log 2 SciTEGlobal.properties *

if PLAT_WIN
    command.scite.help="file://$(SciteDefaultHome)\SciTEDoc.html"
    command.scite.help.subsystem=2
if PLAT_GTK
    command.print.*=a2ps "$(FileNameExt)"
    command.scite.help=xdg-open "file://$(SciteDefaultHome)/SciTEDoc.html"

# Internationalisation
# Japanese input code page 932 and ShiftJIS character set 128
code.page=932
#character.set=128
# Unicode
#code.page=65001
#code.page=0
#character.set=204
#command.discover.properties=python /home/user/FileDetect.py "$(FilePath)"
# Required for Unicode to work on GTK+:
#LC_CTYPE=en_US.UTF-8
if PLAT_GTK
    output.code.page=65001
if PLAT_MAC
    output.code.page=65001

# Export
#export.keep.ext=1
```

7. Close the editor window and click **Open Log in Telnet view**.

---



